

About the Job Plugin Electronica-Tune

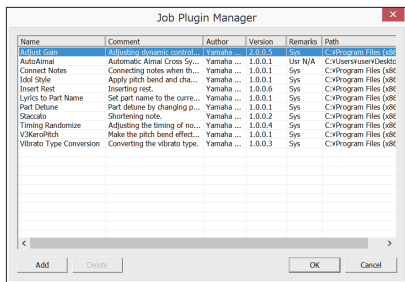
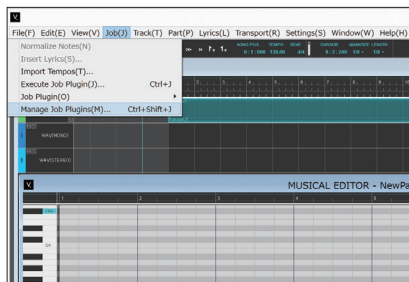
With Job Plugin Electronica-Tune, you can easily make distinctive pitch changes in vocals, making it sound as if an extreme pitch correction was used. You can use this Job Plugin in VOCALOID4 Editor as well as VOCALOID4 Editor for Cubase. Read the usage method below and utilize it in your song production.

Usage Method

Copy the "Electronica-Tune" folder included in the "JobPlugin" folder to any location on your computer. (Be aware that both the "bin" folder and "Electronica-Tune.lua" in the "Electronica-Tune" folder are required for use.)

Furthermore, when moving the folder, designate a location where the path does not contain any special characters, such as Japanese, platform-dependent characters (Examples: ①, I, 横), semicolons (;), or question marks (?).

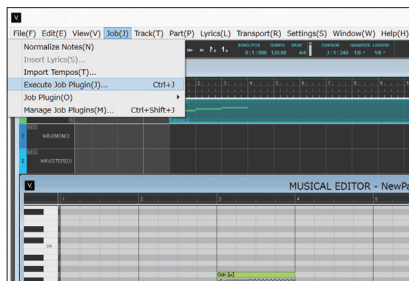
1. Start up VOCALOID4 Editor or VOCALOID4 Editor for Cubase, and from the "Job" menu, select "Manage Job Plugins".
2. On the "Job Plugin Manager" window, add "Electronica-Tune.lua", which is in the "Electronica-Tune" folder you copied.



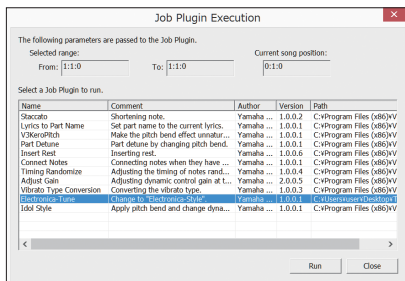
"Electronica-Tune" is now ready for use.

Next, in the Musical Editor, open the part where you want to apply Electronica-Tune. The piano roll window is displayed.

3. From the "Job" menu, select "Execute Job Plugins".



4. A list of Job Plugins registered in VOCALOID4 Editor or VOCALOID4 Editor for Cubase is displayed. Select "Electronica-Tune" here to execute it. (If you execute it with notes selected, you can apply it only to notes in the selected range.)



This completes the explanation. We hope you will use this Job Plugin to produce creative music.