

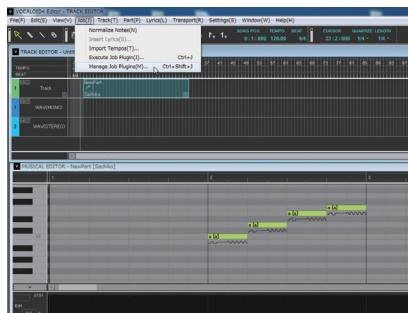
# About the Job Plugin Sachikobushi

Job Plugin Sachikobushi is a Job Plugin that allows you to adjust the Speed and Depth to make the VOCALOID singer sing in the style of Sachiko. You can use this Job Plugin in VOCALOID4 Editor as well as VOCALOID4 Editor for Cubase. Read the usage method below and utilize it in your song production.

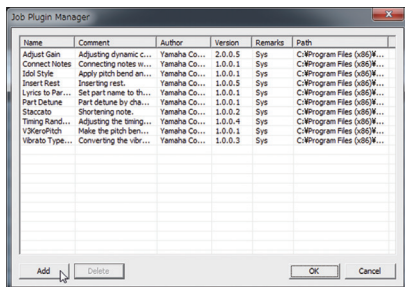
## Usage Method

Copy the "Sachikobushi" folder included in the "JobPlugin" folder to any location on your computer.  
(Be aware that both the "bin" folder and "Sachikobushi.lua" in the "Sachikobushi" folder are required for use.)  
Furthermore, when moving the folder, designate a location where the path does not contain any special characters, such as Japanese, platform-dependent characters (Examples: ①. I. (株), semicolons (;), or question marks (?)).

1. Start up VOCALOID4 Editor or VOCALOID4 Editor for Cubase, and from the "Job" menu, select "Manage Job Plugins".



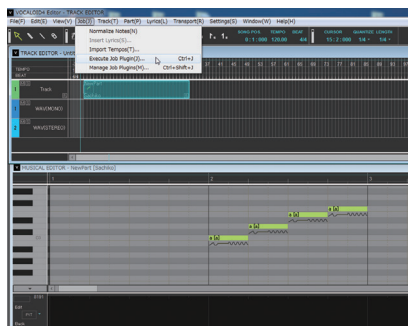
2. On the "Job Plugin Manager" window, add "Sachikobushi.lua", which is in the "Sachikobushi" folder you copied.



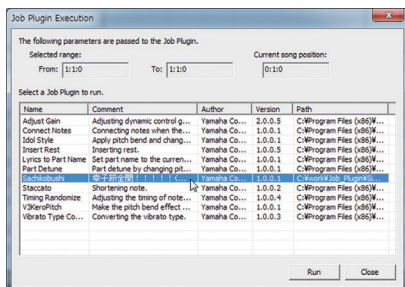
"Sachikobushi" is now ready for use.

Next, in the Musical Editor, open the part where you want to apply Sachikobushi. The piano roll window is displayed. Note that the singer needs to be "Sachiko". (This Job Plugin cannot be applied to any singers other than Sachiko.)

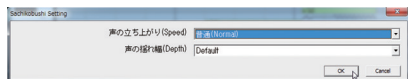
3. From the "Job" menu, select "Execute Job Plugins".



4. A list of Job Plugins registered in VOCALOID4 Editor or VOCALOID4 Editor for Cubase is displayed. Select "Sachikobushi" here to execute it. (If you execute it with notes selected, you can apply it only to notes in the selected range.)



5. In the Setting window, set the "Speed" and "Depth" to the desired levels and click the "OK" button to execute.



This completes the explanation.

Use this Job Plugin to create songs with full of Sachikobushi!